

STATIONARY DAVIT CRANE UP TO 5,500 LBS

CAPTAIN® 4000



CAPTAIN® 5FT40

STATIONARY DAVIT CRANE



MASSIVE LIFTING POWER with Extensive Reach

The 5FT40 Captain Series stationary davit crane is designed for heavy loads up to 5,500 pounds (2,500 kg) and extended reach (ten feet). It also features a maximum hook height of 12 feet. The integral slewing drive withstands large axial, radial, and moment loads while allowing 360 degrees of smooth and easy rotation. A screw jack comes standard for boom angle adjustments. To ease operation and speed productivity, specify an optional power winch or the optional hydraulic boom adjustment—or both! Stainless-steel hardware and corrosion-resistant finishes, including an epoxy-based safety-yellow, resist wear in harsh environments. The 5FT40 is perfect for wind energy, marine, construction, water/wastewater, and oil and gas applications.

360° Rotation & Flexible Operation

- Standard with manually operated slewing drive enhances smooth, 360-degree mast rotation under extreme loads for precise load placement
- Standard screw jack for easy boom angle adjustment
- Optional hydraulic boom adjustment package (includes cylinder, hand pump, and control valve) for boom angle adjustments while under load (5FT40H)

Crane Features & Configurations

- Telescoping boom and adjustable boom angles accommodate a variety of applications
- Choose from manual, drill-drive, or powered winch (electric, pneumatic, or hydraulic motors) operation to accommodate a variety of light or heavy loads and speeds. DC motors and various voltage AC motors available
- Standard recommended rope size is 3/8–1/2 inch based on your lifting requirements
- Configurable to meet European CE and ATEX standards



Product Shown:
5FT40-E2

STANDARD CONFIGURATIONS

Series	IMPERIAL/METRIC	
	Description	Up To Capacity
5FT40-M1	Red-enamel crane and ratchet jack with M452B-K spur gear hand winch	5,500 lbs / 2,500 kg
5FT40-M2	Red-enamel crane with 2W40V-BM-K worm gear hand winch and ratchet jack	5,500 lbs / 2,500 kg
5FT40X-M2X	Gray-epoxy crane with 2W40VEGRA-BMX-K worm spur gear hand winch and ratchet jack	5,500 lbs / 2,500 kg
5FT40-E2	Red-enamel crane with 3WG4B-K electric winch and ratchet jack	5,500 lbs / 2,500 kg
5FT40X-E2X	Gray-epoxy crane with 3WG4B-KX electric winch and ratchet jack	5,500 lbs / 2,500 kg
5FT40-E3	4HWF6M electric winch—see tech pages for winch options	5,500 lbs / 2,500 kg
5FT40X-E3	Gray-epoxy 4HWF6M electric winch—see tech pages for winch options	5,500 lbs / 2,500 kg

All configurations available with 5FT40H crane excluding M1

Durable Construction & Finish

- Boom, mast, and base are fabricated from heavy-duty steel that limits deflection and meets ASTM standards
- Corrosion-resistant finishes and stainless-steel fasteners resist the elements and harsh environments for long service life
- Standard red-enamel finish, optional galvanized, or epoxy (gray, safety-yellow, or custom-color) finishes are available



NOTICE: These products are not for lifting people or things over people.

Refer to technical pages for detailed performance information.

TECHNICAL DRAWINGS & SPECIFICATIONS

CAPTAIN® 4000
STATIONARY DAVIT CRANE

CONFIGURATIONS

Model	Description	Approx. Ship Wt.	
		(lb)	(kg)
Popular Configurations			
5FT40-M1	up to 5,500 lb capacity with M452B-K spur gear hand winch and ratchet jack—red-enamel crane	1,101	500
5FT40-M2	up to 5,500 lb capacity with 2W40V-BM-K worm gear hand winch and ratchet jack—red-enamel crane	1,146	520
5FT40X-M2X	up to 5,500 lb capacity with 2W40V-BMX-K worm spur gear hand winch and ratchet jack—gray-epoxy crane	1,146	520
5FT40-E2	up to 5,500 lb capacity with 3WG4B-K electric winch and ratchet jack—red-enamel crane	1,216	550
5FT40X-E2X	up to 5,500 lb capacity with 3WG4B-KX electric winch and ratchet jack—gray-epoxy crane	1,216	550
*All configurations available with 5FT40H crane excluding M1			
Crane Only			
5FT40	up to 5,500 lb capacity—ratchet jack—red-enamel crane	1,024	460
5FT40G	up to 5,500 lb capacity—ratchet jack—galvanized crane	1,024	460
5FT40X	up to 5,500 lb capacity—ratchet jack—gray-epoxy crane	1,024	460
5FT40H	up to 5,500 lb capacity—hydraulic jack—red-enamel crane	1,064	480
5FT40HG	up to 5,500 lb capacity—hydraulic jack—galvanized crane	1,064	480
5FT40HX	up to 5,500 lb capacity—hydraulic jack—gray-epoxy crane	1,064	480
Winch Only			
M1	M452B-K spur gear hand winch only—clear zinc coating-(Not available for use with the 5FT40H crane)	91	40
M1X	M452B-KX spur gear hand winch only—gray-epoxy finish-(Not available for use with the 5FT40H crane)	91	40
M2	2W40V-BM-K worm gear hand winch only—powder-coat finish	141	60
M2X	2W40V-BMX-K worm gear hand winch only—gray-epoxy finish	141	60
E2	3WG4B-K electric winch—115/1/60 VAC with 6 ft pendant control—enamel finish	188	85
E2X	3WG4-KX electric winch—115/1/60 VAC with 6 ft pendant control—gray-epoxy finish	188	85
E2L	3WG4B-KL limit switch ready electric winch—115/1/60 VAC with 6 ft pendant control	187	85
E2LX	3WG4BEGRA-KL limit switch ready electric winch—115/1/60 VAC with 6 ft pendant control—gray-epoxy finish	187	85
E3DL	4HWF6M-KDL 230/3/60 VAC with control enclosure, 10' pendant—red-enamel finish	476	216
E3DLX	4HWF6MX-KDL 230/3/60 VAC with control enclosure, 10' pendant—gray-epoxy finish	476	216
E3EL	4HWF6M-KEL 460/3/60 VAC with control enclosure, 10' pendant—red-enamel finish	476	216
E3ELX	4HWF6MX-KEL 460/3/60 VAC with control enclosure, 10' pendant—gray-epoxy finish	476	216

Wire Rope Assemblies—sold separately

Galvanized or stainless steel wire rope assemblies. 316 stainless steel assemblies available—contact factory. For extended wire rope length—contact factory.

Wire Rope Length		Galvanized Aircraft Cable Swivel Hook and Unfinished End	304 Stainless Steel Wire Rope		Galvanized EIPS Steel Wire Rope Carbon Steel Swivel Hook and Plain End	
			Swivel Hook and Unfinished End	Carbon Steel Swivel Hook and Plain End		
		3/8" Dia. (9.53 mm)	3/8" Dia. (9.53 mm)	7/16" Dia. (11.11 mm)	1/2" Dia. (12.7 mm)	
(ft)	(m)	Model No.	Model No.	Model No.	Model No.	Model No.
28	8.5	WA38-28DS	WS38-28DS	WS44-28DS	WS50-28DS	WEG44-28DS
36	10.9	WA38-36DS	WS38-36DS	WS44-36DS	WS50-36DS	WEG44-36DS
45	13.7	WA38-45DS	WS38-45DS	WS44-45DS	WS50-45DS	WEG44-45DS
60	18.2	WA38-60DS	WS38-60DS	WS44-60DS	WS50-60DS	WEG44-60DS
75	22.8	WA38-75DS	WS38-75DS	WS44-75DS	WS50-75DS	WEG44-75DS

PERFORMANCE

Captain 4000 5FT40 Series
Lift Below Floor¹ Level

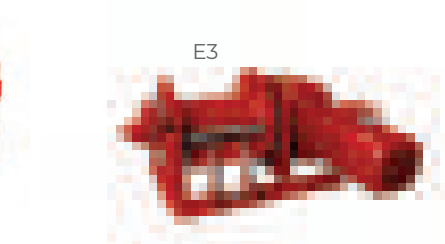
Lift Below Floor²		Wire Rope Diameter		Wire Rope Length		Winch Configurations Maximum Winch Rating							
						M1*		M2		E2		E3	
Minimum (C4)	Maximum (C1)												
(ft)	(m)	(ft)	(m)	(in)	(mm)	(ft)	(m)	(lbs)	(kg)	(lbs)	(kg)	(lbs)	(kg)
-4	-1	2	0	3/8"	10	28	8	4,100	1,860	4,100	1,860	4,100	1,860
4	1	10	3	3/8"	10	36	10	4,100	1,860	4,100	1,860	3,600	1,630
13	3	19	5	3/8"	10	45	13	3,700	1,680	4,100	1,860	3,600	1,630
28	8	34	10	3/8"	10	60	18	3,700	1,680	3,700	1,680	3,200	1,450
43	13	49	14	3/8"	10	75	22	3,400	1,540	3,400	1,540	3,200	1,450
58	17	64	19	3/8"	10	90	27	—	—	3,400	1,540	2,900	1,310
88	26	94	28	3/8"	10	120	36	—	—	—	—	2,700	1,220
118	35	124	37	3/8"	10	150	45	—	—	—	—	—	—
168	51	174	53	3/8"	10	200	60	—	—	—	—	—	—
-4	-1	2	0	7/16"	11	28	8	3,900	1,770	3,900	1,770	3,300	1,500
4	1	10	3	7/16"	11	36	10	3,400	1,540	3,900	1,770	3,300	1,500
13	3	19	5	7/16"	11	45	13	3,400	1,540	3,400	1,540	3,300	1,500
28	8	34	10	7/16"	11	60	18	3,000	1,360	3,000	1,360	2,900	1,315
43	13	49	14	7/16"	11	75	22	—	—	3,000	1,360	2,600	1,180
58	17	64	19	7/16"	11	90	27	—	—	—	—	2,600	1,180
88	26	94	28	7/16"	11	120	36	—	—	—	—	—	—
118	35	124	37	7/16"	11	150	45	—	—	—	—	—	—
168	51	174	53	7/16"	11	200	60	—	—	—	—	—	—
-4	-1	2	0	1/2"	13	28	8	3,700	1,680	3,700	1,680	3,200	1,450
4	1	10	3	1/2"	13	36	10	3,200	1,450	3,700	1,680	3,200	1,450
13	3	19	5	1/2"	13	45	13	3,200	1,450	3,200	1,450	2,800	1,270
28	8	34	10	1/2"	13	60	18	—	—	—	—	2,800	1,270
43	13	49	14	1/2"	13	75	22	—	—	—	—	—	—
58	17	64	19	1/2"	13	90	27	—	—	—	—	—	—
88	26	94	28	1/2"	13	120	36	—	—	—	—	—	—
118	35	124	37	1/2"	13	150	45	—	—	—	—	—	—
168	51	174	53	1/2"	13	200	60	—	—	—	—	—	—

¹Performance characteristics are for standard products. Non-standard products may vary from the original design. Contact Thern, Inc. for this information.

²Lift below floor level varies depending on boom position and base configuration. For longer lifts, please contact factory.

*Not available for use with the 5FT40H crane.

Winch Configurations

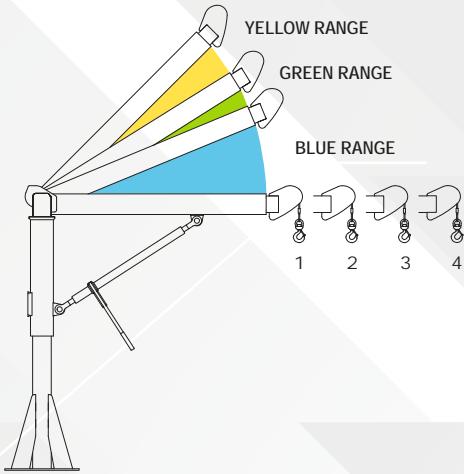


not shown—control enclosure mounted

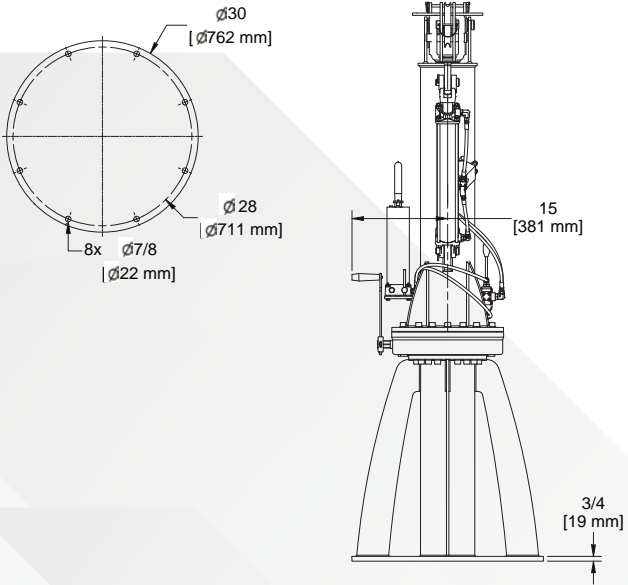
Captain 4000 Performance Ratings

Boom Position	1st Layer Load Rating		Hook Reach		Hook Height**	
	(lb)	(kg)	(in)	(mm)	(in)	(mm)
BLUE RANGE	A-1	4,800	77	1,955	68	1,727
	A-2	4,100	92	2,337	68	1,727
	A-3	3,500	107	2,718	68	1,727
	A-4	3,000	122	3,099	68	1,727
GREEN RANGE	B-1	5,500	69	1,753	102	2,591
	B-2	4,600	82	2,083	108	2,743
	B-3	4,000	96	2,438	115	2,921
	B-4	3,300	109	2,768	121	3,073
YELLOW RANGE	C-1	5,500	55	1,397	122	3,099
	C-2	4,600	66	1,677	132	3,353
	C-3	4,000	77	1,955	143	3,632
	C-4	3,300	87	2,209	153	3,886

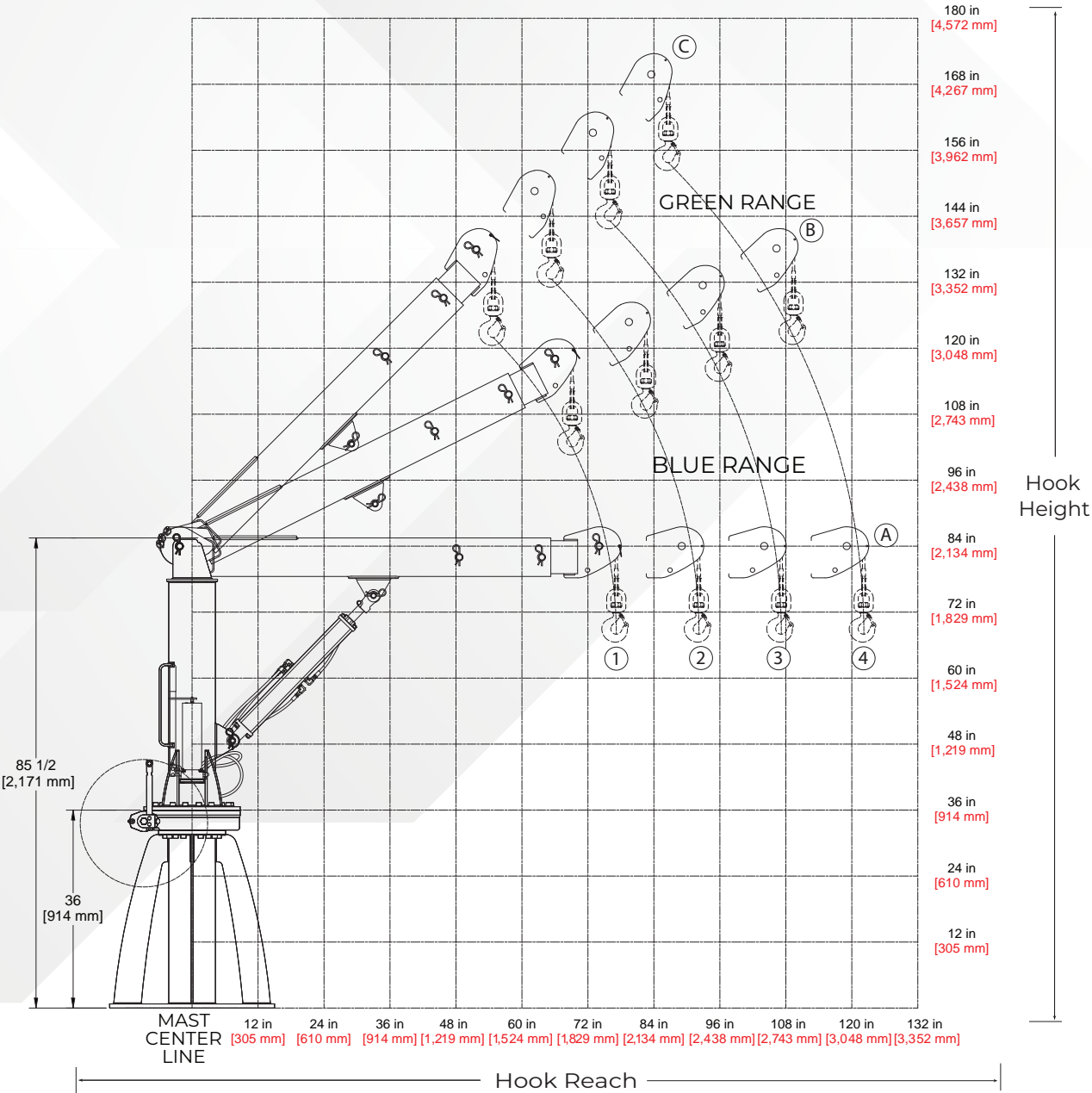
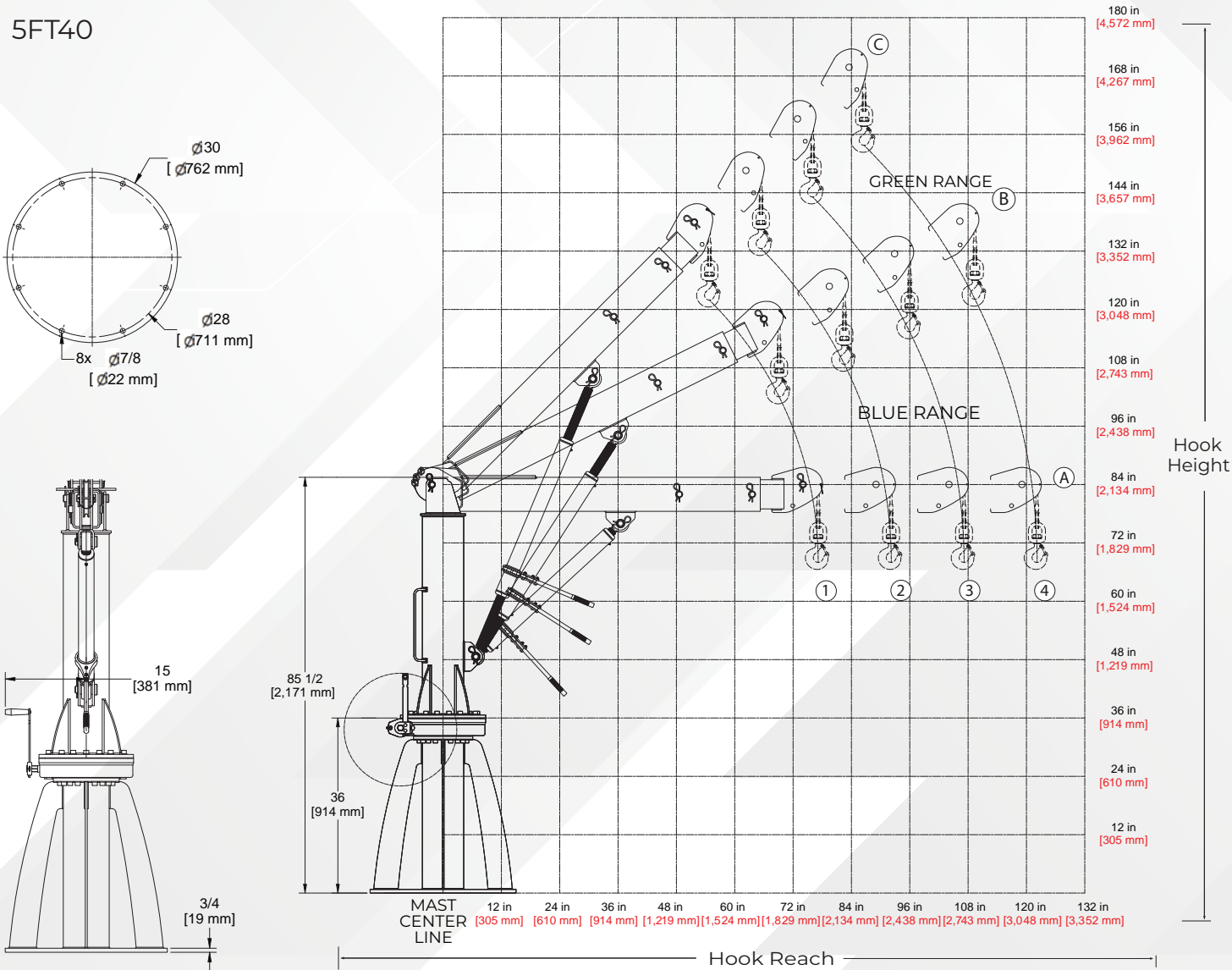
Dimensions are for reference only and subject to change without notice.
**Crane maximum load rating. Load rating may decrease as layers of rope wind onto the winch-drum. Refer to winch-specific information



5FT40H



5FT40





MADE IN USA 

Thern, Incorporated

World Headquarters
5712 Industrial Park Road Winona, MN USA
Toll Free: 1-800-843-7648
Phone: 1-507-454-2996
www.thern.com

Thern Europe

Bedrijvenpark Twente 454e
7602 KM Almelo The Netherlands
Phone: +31-546-898-380
europa@thern.com