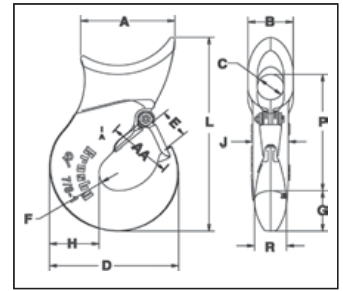


Crosby® Forged Hooks



A-350L
SLIDING CHOKER HOOK

- New style incorporates throat opening equal to or larger than old style hooks.
- Each product has a Product Identification Code (PIC) for material traceability, along with a Working Load Limit, and the name Crosby or "CG" forged into it.
- All hooks incorporate Crosby's patented QUIC-CHECK® marks to help in determining if throat opening dimension has changed.
- Each hook is equipped with a Crosby S-4320 heavy duty stamped latch with the high cycle, long life spring.
- Forged Alloy Steel -- Quenched and Tempered.



A-350L Sliding Choker Hook

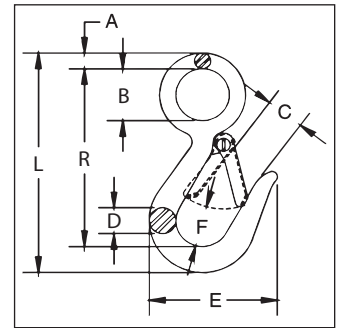
Single Part Rope Size (in)	Eight Part Rope Size (in)	A-350L Stock No.	Working Load Limit (lb)	Weight Each (lb.)	Dimensions (in)													Hook Frame Code	Replacement Latch Kit Stock No.
					A	B	C	D	E	F	G	H	L	P	R	AA**			
3/8	-	1011802	2500	1.0	2.06	1.13	.63	2.41	.63	.38	.84	.91	4.28	2.59	.63	1.50	D	1096325	
1/2	1/8	1011811	3800	1.4	2.25	1.31	.75	2.97	.78	.50	.97	1.06	4.97	3.09	.75	1.50	F	1096374	
† 5/8	-	1011820	5800	3.0	3.06	1.63	.75	3.56	.94	.56	1.13	1.31	6.38	3.88	1.00	2.00	G	1096421	
† 5/8	3/16	1011839	5800	2.7	3.06	1.63	1.00	3.56	.94	.56	1.13	1.31	6.38	4.00	1.13	2.00	G	1096421	
† 3/4	-	1011848	8200	4.4	3.38	2.13	1.00	4.25	1.16	.63	1.44	1.63	7.66	4.58	1.13	2.50	H	1096468	
† 3/4	1/4	1011857	8200	3.8	3.38	2.13	1.44	4.25	1.16	.63	1.44	1.63	7.66	4.78	1.13	2.50	H	1096468	
†† 7/8-1	-	1028177	15000	9.70	4.41	2.12	1.25	6.06	1.41	.88	2.00	2.33	9.55	5.72	1.50	3.00	I	1096515	

** Deformation Indicators. † Determine EYE diameter "C", before ordering. †† 7/8-1" is Cast Steel.



G-3315
SNAP HOOK

- Forged Carbon Steel -- Quenched and Tempered.
- Pressed steel latches and stainless steel springs, bolts and nuts.
- For replacement latch kit, order Stock No. 9900299.
- Hook Body -- Galvanized.



G-3315 Snap Hook

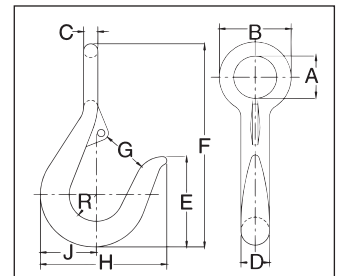
Hook Size (in)	G-3315 Stock No.	Working Load Limit (lb)*	Weight Each (lb)	Dimensions (in)							
				A	B	C	D	E	F	L	R
7/16	1023056	750	.23	.25	.75	.75	.44	2.25	.75	3.94	3.25
9/16	1023074	1000	.48	.34	1.12	.81	.56	2.69	.88	4.75	3.84

*Ultimate Load is 4 times the Working Load Limit.



1210 Round
REVERSE
EYE HOOK

- Forged Carbon Steel -- Galvanized.



1210 Round Reverse Eye Hook

Size (in)	1210 Stock No.	Working Load Limit (lb)*	Weight Each (lb)	Latch Stock No.	Dimensions (in)									
					A	B	C	D	E	F	G	H	J	R
1/2	919019	300	.4	1090027	.81	1.38	.28	.50	1.62	4.00	.75	2.25	.97	.47
5/8	919037	400	.6	1090027	.94	1.56	.31	.62	2.00	4.50	.94	2.75	1.22	.59
3/4	919055	700	1.1	1090045	1.12	1.88	.38	.75	2.25	5.25	1.06	3.00	1.44	.69
7/8	919073	1200	1.6	1096468	1.19	2.06	.44	.88	3.00	6.50	1.25	3.38	1.63	.75
1 - 1-1/8	919091	1800	2.0	1090081	1.50	2.75	.62	1.12	3.50	8.00	1.50	4.38	2.00	.94
1-1/4 - 1-3/8	919135	2700	5.5	1090081	1.88	3.50	.81	1.38	4.00	9.12	1.62	5.00	2.38	1.06

*Ultimate Load is 4 times the Working Load Limit.